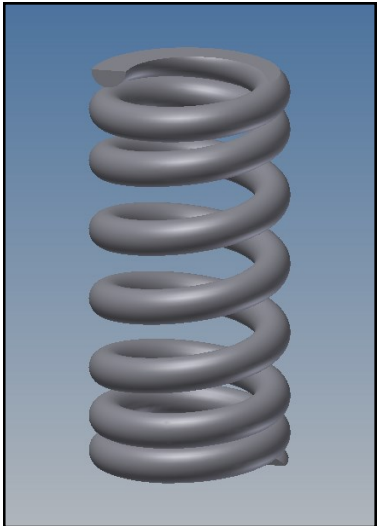
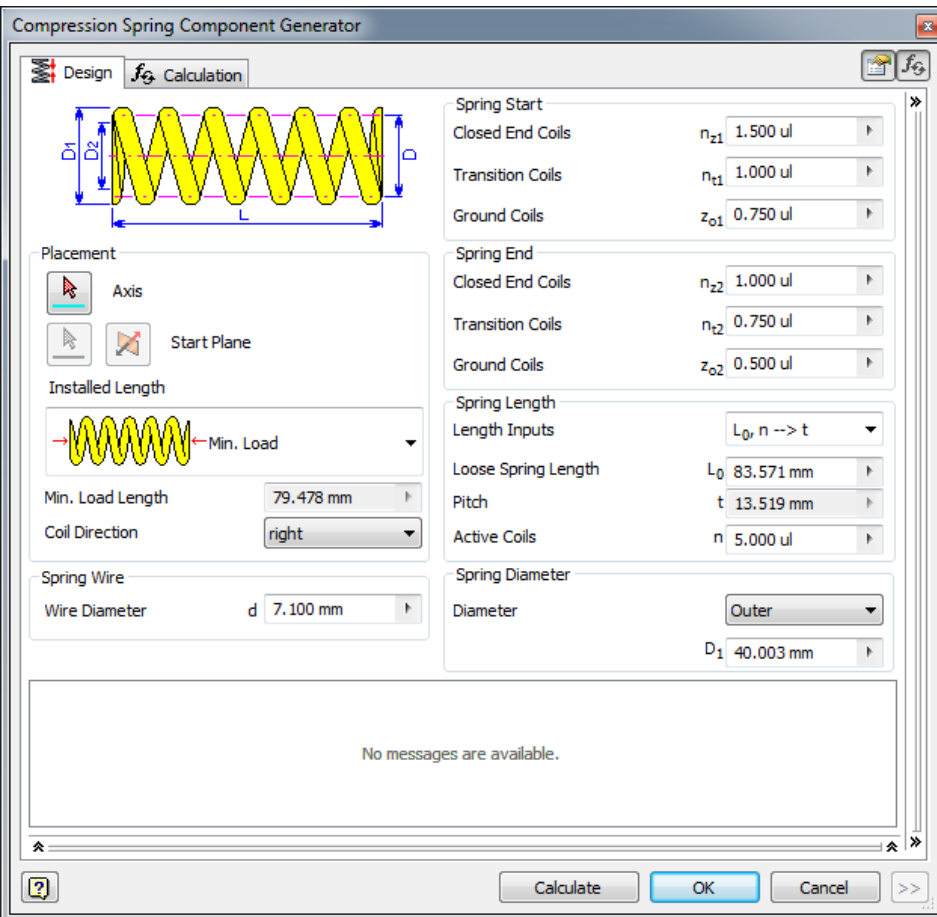
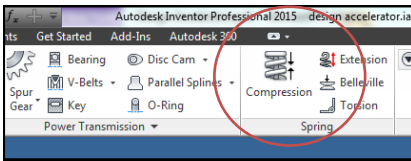


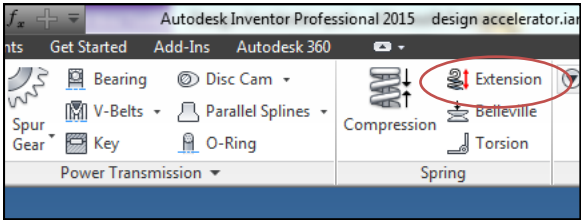
## Assembly Exercise. Design Accelerator

## Create complex assemblies with Design accelerator

**Springs.** Use the default values shown below in Fig 1.0 to create a realistic model of a Compression Spring.



**FIG 1.0**



**Springs.** Use the default values shown below in Fig 2.0 to create a realistic model of an Extension Spring.

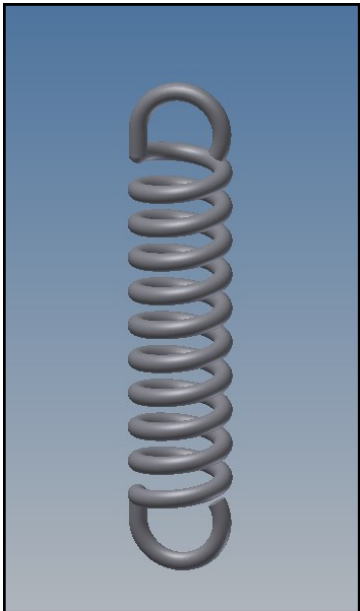
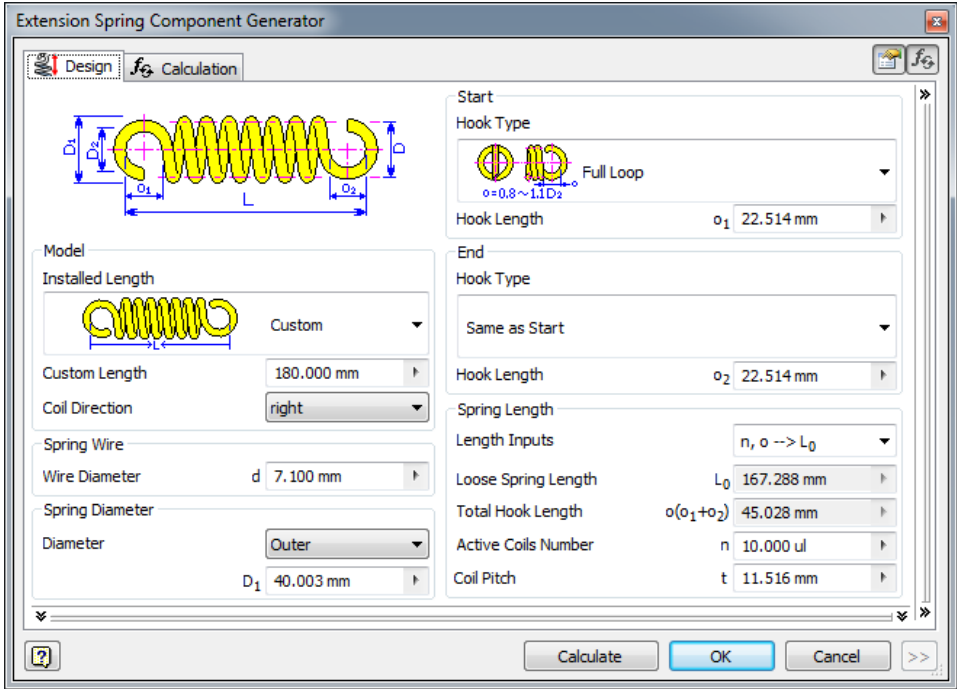
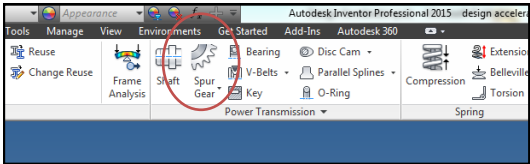


FIG 2.0



**Gears.** Use the default values shown below in Fig 3.0 to create a realistic model of Spur Gears (Fig 4.0 over page)

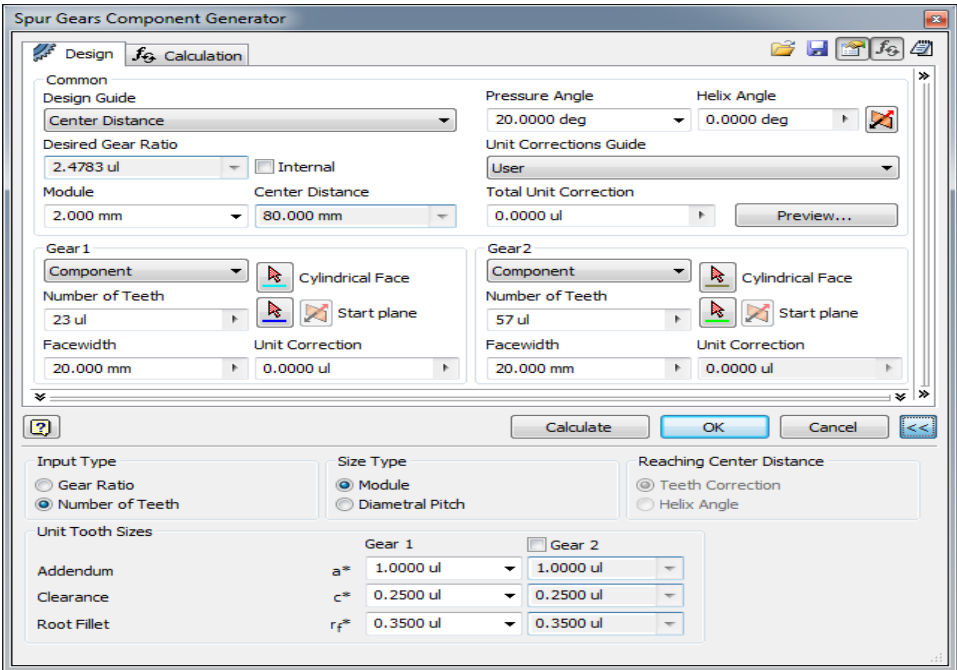
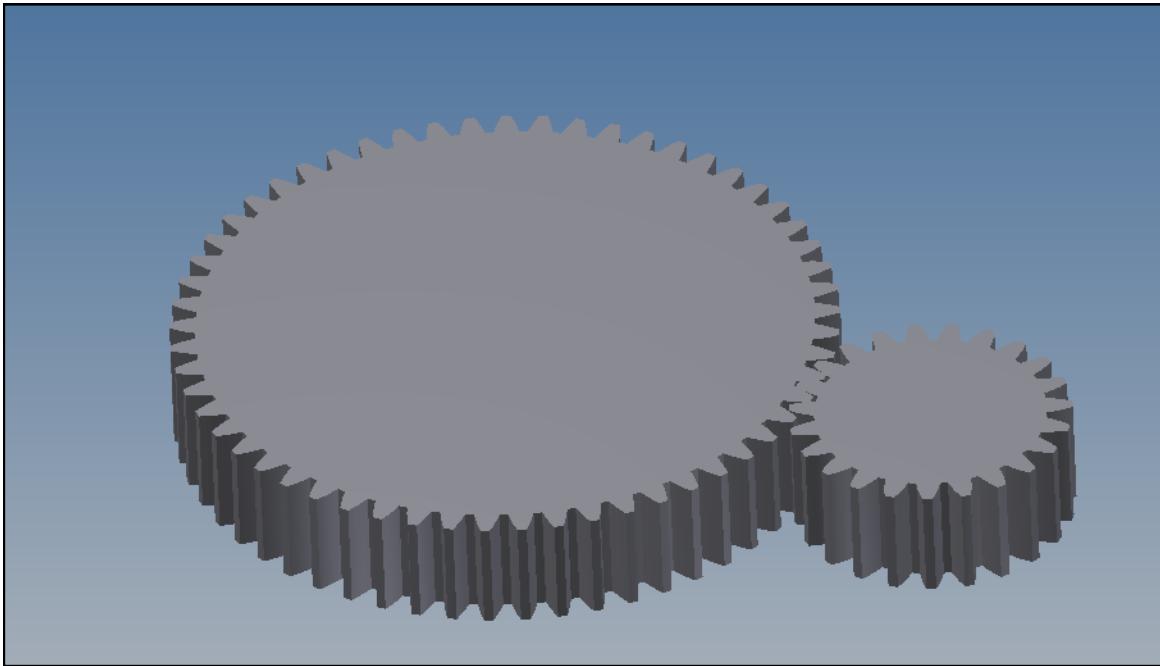


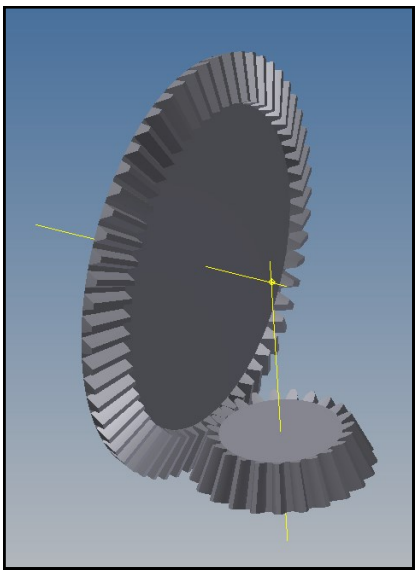
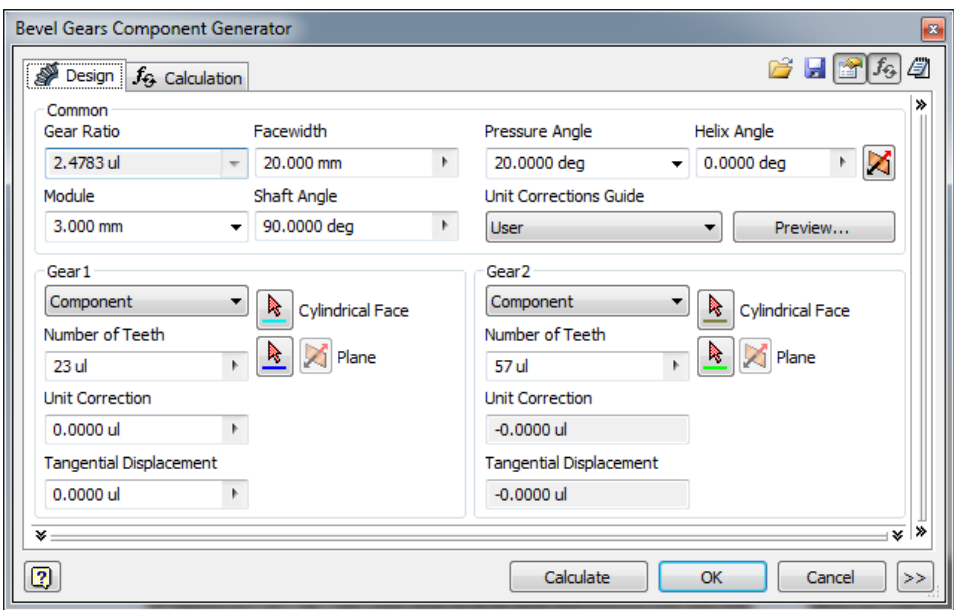
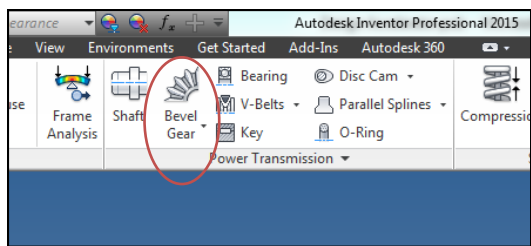
FIG 3.0

**Fig 4.0** shows an example of two meshed spurs gears.



**FIG 4.0**

**Gears.** Use the default values shown below in Fig 5.0 to create a realistic model of Bevel Gears.



**FIG 5.0**